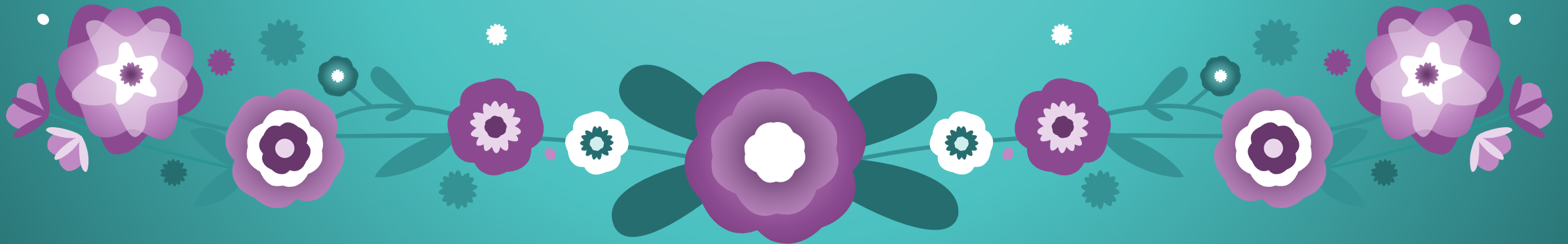


# nehinaw onikaniwin

Saskatchewan Principal's Short Course  
July 3, 2025

Presentation provided by:  
Patricia St. Denis, Elizabeth Read, Lisa Chatelaine



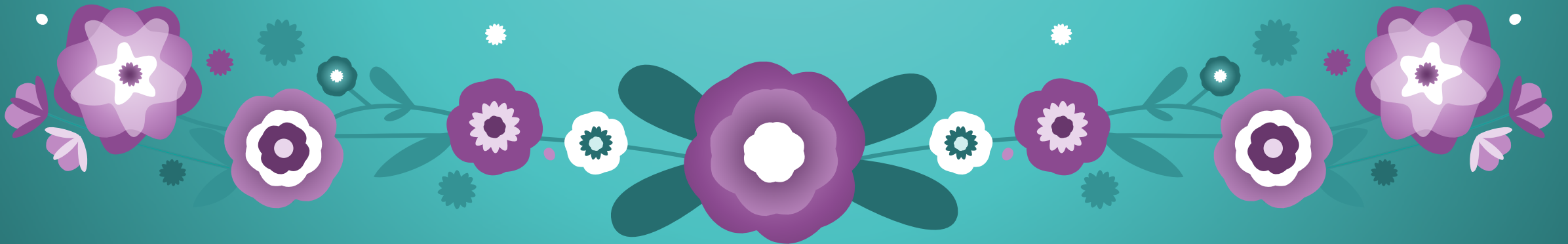
# MLTC Education



- Patricia St. Denis- Sr. Director of Education
- Elizabeth Read- Superintendent of Education
- Lisa Chatelaine- Superintendent of Education

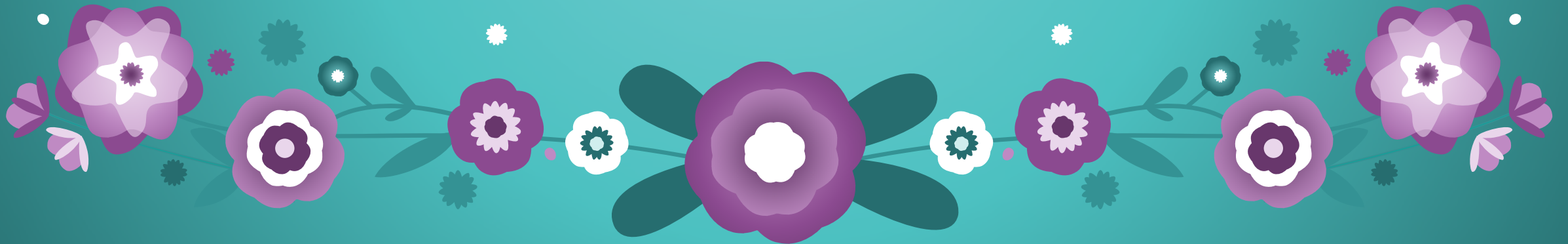
## MLTC Education

- MLTC Education Second Level Services provides educational supports to a diverse student and community population. These services are enhanced through the Indigenous Services Canada's Second Level Service Funding.
- Our commitment is to empower learners in collaboration with the nine Meadow Lake First Nations communities and school staff.
- The goal is to provide K-12 second level service supports for the maintenance and development of a quality elementary and secondary education within our nine Meadow Lake First Nation Schools by building capacity, ensuring provincial certification, and responding to learners and schools individual needs.



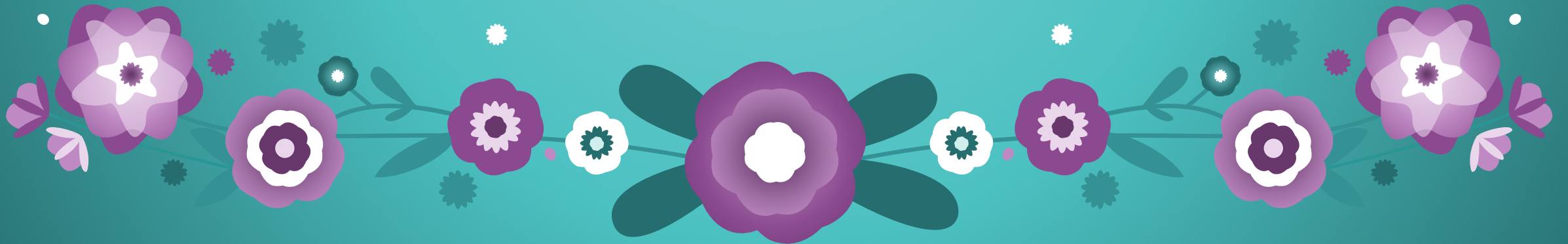
## MLTC Education

- Additionally, MLTC Education believes in developing and enhancing interagency and community partnerships both formally & informally. This builds community strength and capacity as we work together.
- MLTC education supports 5 Cree and 4 Dene Communities
- Student enrolment of 2800
- Teaching and support staff of 400



# Stewarding Learning

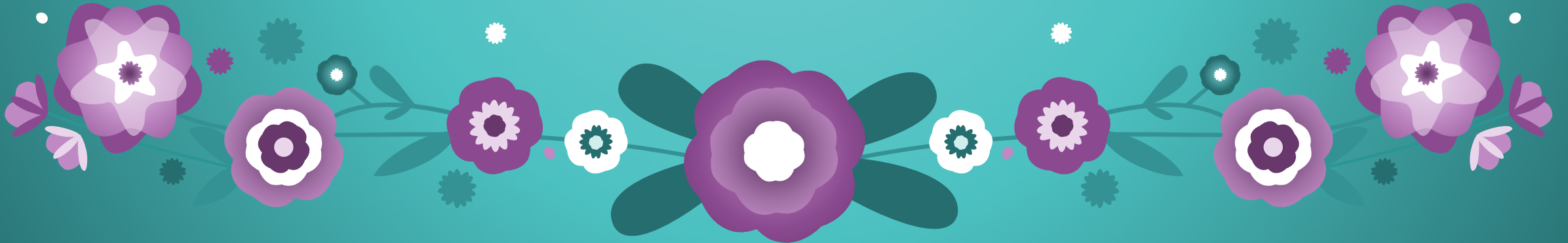
## MLTC Education Story




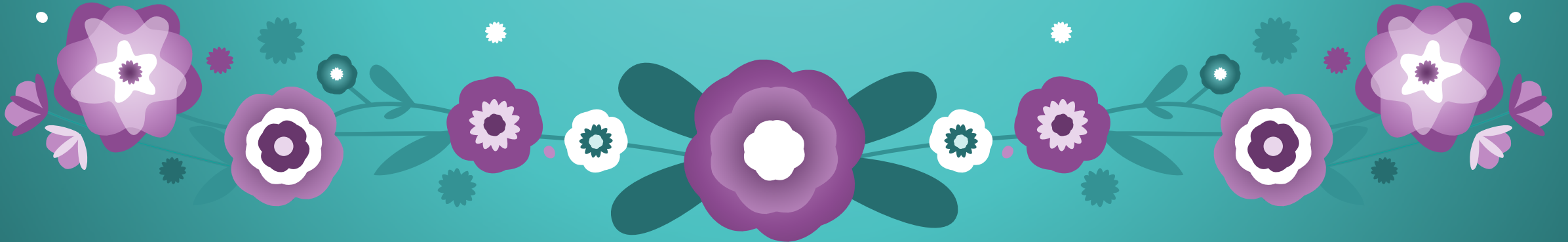



# Guiding Questions

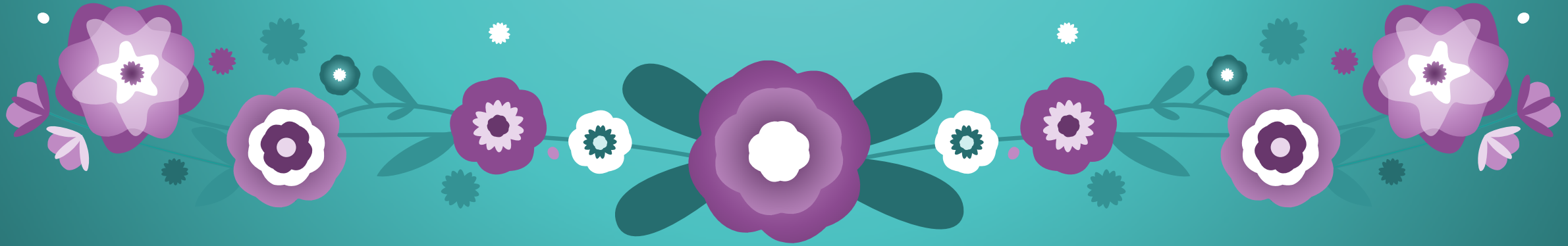
1. How do you create an imperative for instructional leadership among school leaders in your organization?
2. What priorities and strategies can early career school leaders adopt to enhance their instructional leadership capacities?
3. How can school leaders foster the development of collaborative school teams to support the development of instructional leadership?



 <b>PILLARS</b>	<b>RESPOND TO LEARNER NEEDS</b>						<b>ENGAGE IN AUTHENTIC ASSESSMENT</b>						<b>COLLABORATIVE SCHOOL &amp; COMMUNITY RELATIONSHIPS</b>					
<b>GOALS</b>	Learning Environment		Responsive Instruction				Data Collection Tools			Classroom Practice			Climate & Culture			Collaborative Partnerships		
	Building Relationships	Leading Learning	Designing Environments	Building Relationships	Leading Learning	Designing Environments	Building Relationships	Leading Learning	Designing Environments	Building Relationships	Leading Learning	Designing Environments	Building Relationships	Leading Learning	Designing Environments	Building Relationships	Leading Learning	Designing Environments
<b>CHOICE</b>																		



BUILDING RELATIONSHIPS, LEADING LEARNING, AND DESIGNING ENVIRONMENTS			SCHOOL	
SUPERINTENDENT CHECKLIST			DATE	
	SUPPORT / INITIATIVE	PROGRESS	COMMENTS / SUPPORTS REQUESTED AND PERSONNEL	
NER NEEDS Learning Environment	<b>Teacher Appraisal-PGP Process (Pillar 1, 2 &amp; 3)</b> Teacher Rubric and Self-Assessment Teacher Goal Setting Initial Observation & Three Minute Walk Throughs Evidence (pictures, videos, anecdotal notes, portfolios, quality feedback conversations, etc.) Instructional Leadership Guidelines/Timelines Requested Superintendent Observation <b>SBA Appraisal-PGP Process (SSP, Pillar 1,2,3)</b>			
	<b>Induction &amp; Mentorship</b> How are you supporting new teachers to the profession, new teachers to the Tribal Council, experienced teachers needing extra support? How are you building capacity within your school for future leadership roles?			
	<b>CIA</b> <b>Catalyst Teachers (Numeracy and Literacy)</b> Roles and Responsibilities Expectations Networking/Job Shadow/Coaching Data Coordinators/Consultants (Are coordinator/consultants supports aligning with the program initiatives in your school?) <b>PAA-Middle Years Survey Program &amp; High School program</b> <b>PIC-Digital Citizenship, Cyber Bullying</b>			





**PILLAR 1****RESPOND TO LEARNER NEEDS****PILLAR 2****ENGAGE IN AUTHENTIC  
ASSESSMENT****PILLAR 3****COLLABORATIVE SCHOOL  
& COMMUNITY  
RELATIONSHIPS****RUBRIC CONNECTIONS****Learning Environment**

- ~ LLRC
- ~ Next Generation Learning (NGL)
- ~ Physical Environment
- ~ Resources & Digital Tools

**Data Collection Tools**

- ~ Holistic Assessment
- ~ Responding to Data
- ~ Assessment Planning
- ~ Assessment Practice
- ~ Reporting

**Climate & Culture**

- ~ LLRC
- ~ Classroom Climate
- ~ Digital Rights & Responsibilities
- ~ Life-Long Learning

**Responsive Instruction**

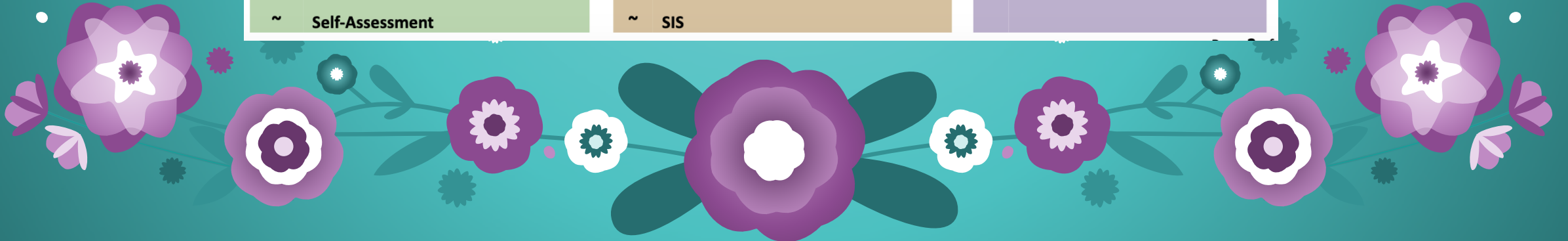
- ~ LLRC
- ~ Media Literacy
- ~ Co-Constructed Criteria
- ~ Self-Assessment

**Classroom Practice**

- ~ LLRC
- ~ Digital Citizenship
- ~ Planning & Instruction
- ~ SIS

**Collaborative Partnerships**

- ~ Communication & Relationships
- ~ Connections
- ~ Collaborative Culture



# ho'íe ts'en ghiná /miyo-pimātsiwin: Living the Good Life to the Fullest

Student Success grounded by Indigenous Values & Laws

\*Language is embedded into every aspect and every opportunity.

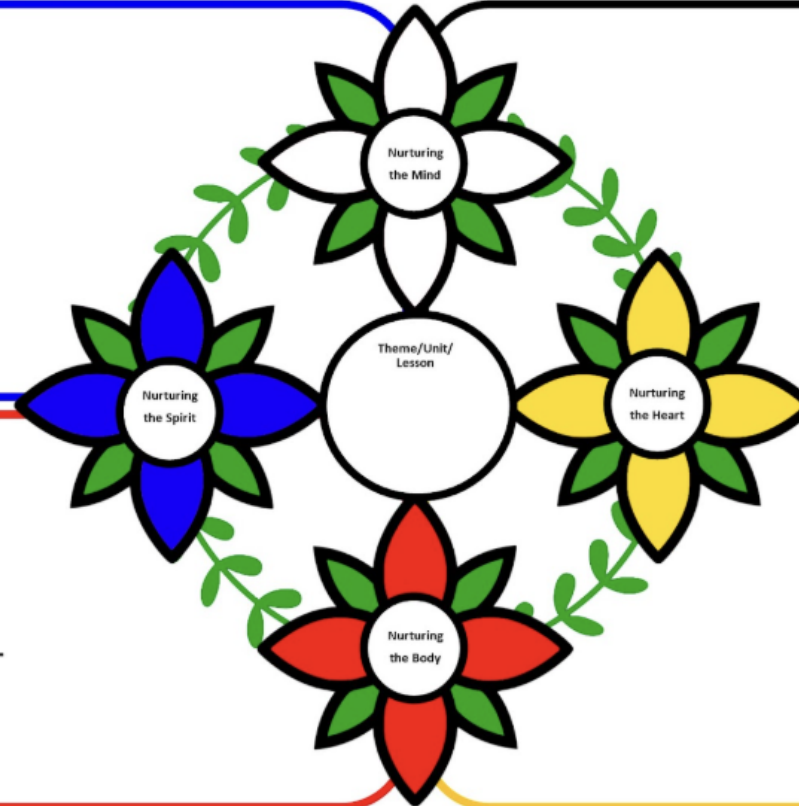
**2024 - 2025  
School Success  
Plans**

**School:**

---

**Principal:**

---

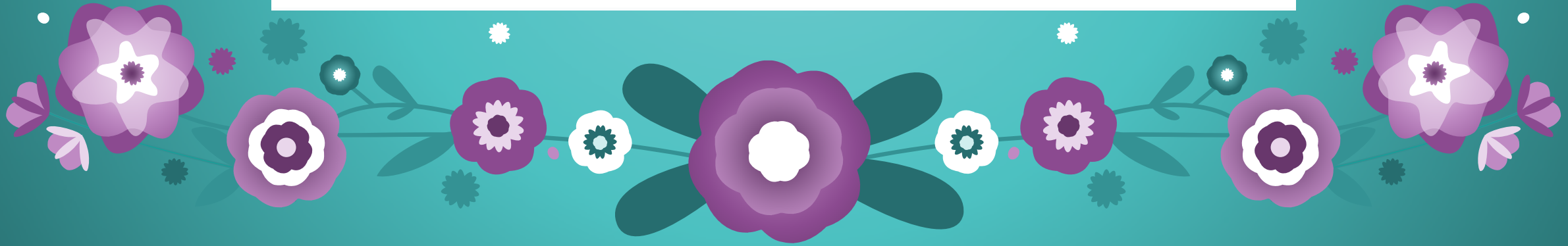


©Celia Deschambeault 2021

# miyo-pimāṭisiwin: Living the Good Life to the Fullest

Teaching and Planning through a Holistic Lens to be able to Walk in Two Worlds.

\*Language is embedded into every aspect and every opportunity.



kinaskomitinaw

